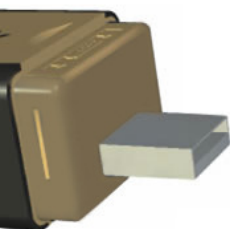


Trackstick™

Designed for
**Google
Earth™**



The Trackstick II™ is the perfect fit for personal GPS tracking. Bring it on vacation to keep a satellite scrapbook of all your travels and record your explorations. You can carry it along on all your regular outings from home to get a better sense of your daily surroundings through Google Earth's™ cohesive 3D maps of your community. With Trackstick II™ a computer screen can guide your family and friends on a virtual tour of your vacation. Take it fishing and mark the catch spots to discover feeding patterns over time. Find a good camping spot and leave it to Trackstick™ to remember where it is and the path you took to get there. It's a fun and immersive way to show others where you've been. You'll even enjoy seeing the normal routes of your day breathe new life as you view them like never before with Google Earth's™ 3D model of the users are always finding new and interesting uses for the Trackstick.™

This device is conveniently powered by just two (2) AAA batteries. Proprietary low power GPS technology will keep the Trackstick II™ running for up to a full week and the 1Mb flash memory ensures that the Trackstick II™ will log weeks or even months of travel histories.

The Trackstick II™ will work anywhere on the planet. Using the latest in GPS mapping technologies from Google Earth™, your exact location can be shown on satellite-based maps and 3D geographical terrain.

With the detachable belt clip, Trackstick II™ can be carried on a belt, in a bag or purse, or covertly installed and placed on anything that moves. Trackstick's™ technology enables a continuously updated record of the exact route, stop times, speed and direction, among other valuable information. User selectable features allow the record time to be changed from an interval of every 5 seconds, or from 1 minute to every 15 minutes.

All of Trackstick™ II's information can easily be downloaded to your computer via the USB port and quickly viewed on Google Earth's™ 3D model of the planet. No monthly fees are required and all software needed to run Trackstick II's™ technology is included.

4 1/2" X 1 1/4" X 3/4"

2.5 meter horizontal accuracy

Integrated USB 2.0 connector

Weatherproof case and detachable belt clip.

Integrated directly into Google™ Earth for worldwide use.

1Mb flash memory records months of location histories.

Runs on two (2) AAA batteries.

Fully compatible with all versions of Google™ Earth and other off the shelf programs via .CSV and other file formats.


Requires Windows™ XP compatible computer with USB1.1/2.0 port for mapping and data retrieval.



© Copyright 2007

Trackstick.com

A Division of Telespial Systems, Inc.

 Made in the USA